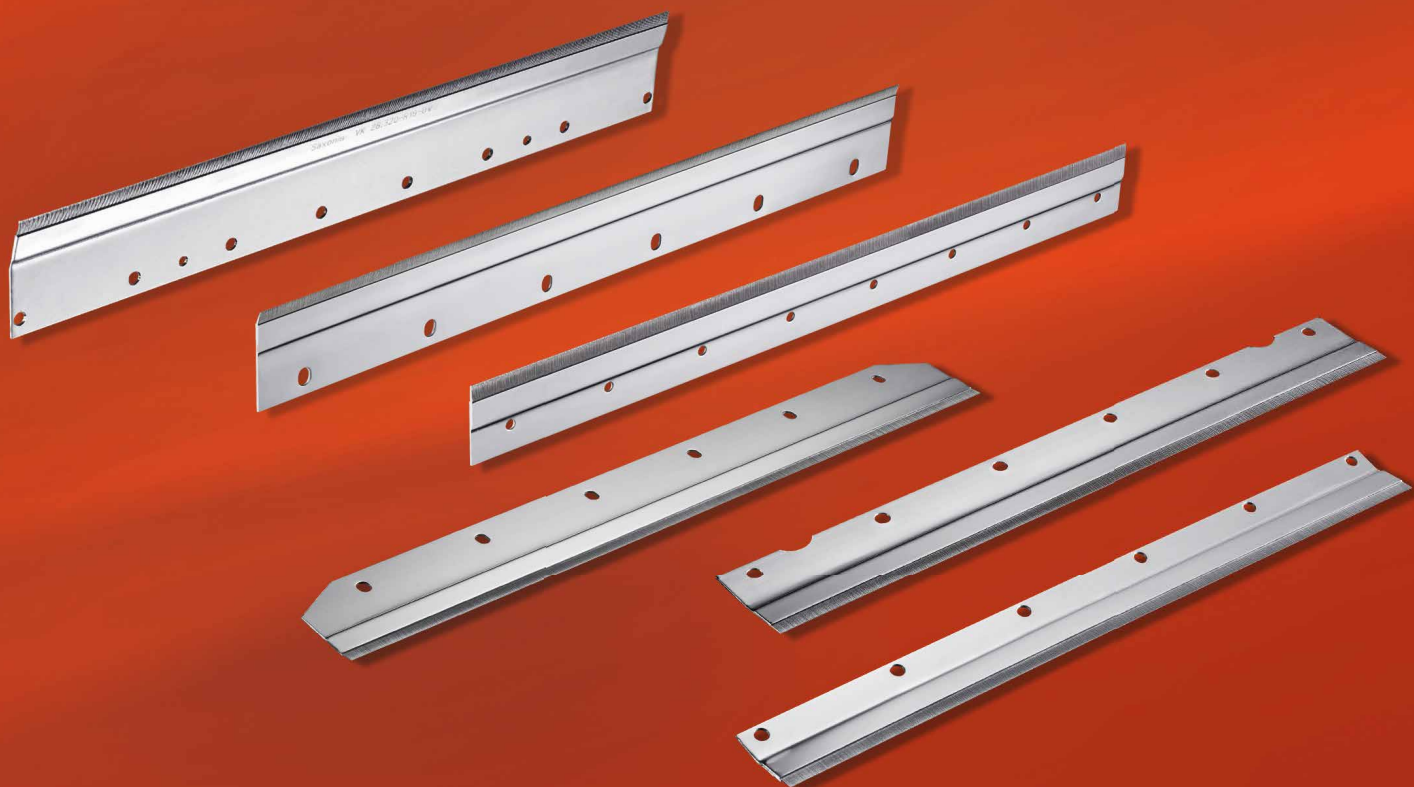




# From Fibre to Yarn

Top Comb for Cotton Combing Machines >>



**SAXONIA**

TEXTILE PARTS



**PAUL LEISTNER** offers a comprehensive assortment of top combs for cotton combing machines. Combs for different machine types of all leading combing machine manufacturers can be delivered. Paul Leistner's special expertise shows in the exact and repeatable configuration of the pins and the accuracy of pinning densities and projections. Thereby the tops can be kept extremely clean which is a prerequisite for an optimum spinning process.

Combing Machine	Modell
RIETER	E7/4, E7/5, E7/5A, E7/6, E60/E70, E62/E72, E65/E75, E66/E76, E80
MARZOLI	PX1, PX2, CJ40, CJ60, CJ66
VOUK	CM400, CM500
HARA	VC250, VC300, VC300A, VC5A, VC5
TOYOTA	VC5A, VC5, CM100, TCO12 (TRUETZSCHLER)
TRUETZSCHLER	TC01
LAKSHMI	E7/4, LK250, LK54, LK64
HOWA CARTORY	
SACO LOWELL	
TEXTIMA / CSM	1531, 1531/1, 1532, 1533, 1534, 1534/1
JINGWEI	FA266, FA269, FA1268A, FA1272, FA1275
KAIGONG	JSFA286, JSFA288, JSFA388, JSFA388A
HAOCHANG	HC350, HC500, HC600
HENGXING	SXFA289, SXFA299, SXFA299B

**Pinning Density**

**Pins per cm**

22  
26  
28  
30

**SAXONIA**

TEXTILE PARTS

Bayerische Nadelleistenfabrik  
Paul Leistner GmbH  
Walpersdorfer Str. 51, 91126 Schwabach  
E-mail: info@paul-leistner.de  
[www.paul-leistner.de](http://www.paul-leistner.de)